

# GO-GO

**ELITE TRAVELLER® PLUS**

3 & 4-WHEEL SCOOTER

## FEATURES, PERFORMANCE, AND TRAVEL READY

The **Go-Go® Elite Traveller Plus** offers style and performance for your on-the-go lifestyle. Standard features include a delta tiller with wraparound handles, feather-touch disassembly, black, non-scuffing tires, front basket and an 18 AH battery pack. A 300 lb. weight capacity and a maximum speed up to 4.5 mph complement the versatility of the Go-Go Elite Traveller Plus.



Feather-touch disassembly



Go-Go Elite Traveller® Plus  
4-wheel



Go-Go Elite Traveller® Plus  
3-wheel

PRIDE® **MOBILITY SCOOTERS**  
LIVE YOUR BEST®

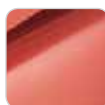
[pridemobility.com](http://pridemobility.com)

# SPECIFICATIONS

## GO-GO ELITE TRAVELLER® PLUS

3W: SC53 4W: SC54

Weight capacity:	300 lbs.
Maximum speed <sup>1</sup> :	Up to 4.5 mph
Ground clearance <sup>2</sup> :	3" at frame, 1.5" at motor
Turning radius:	3W: 34.5" 4W: 45.72"
Overall length <sup>2</sup> :	3W: 40" 4W: 40.25"
Overall width <sup>2</sup> :	21.25"
Front tires:	2" x 8" solid
Rear tires:	3" x 9" solid
Range per charge <sup>1,4</sup> :	3W: Up to 14.4 miles 4W: Up to 8.3 miles
Total weight without batteries <sup>5</sup> :	3W: 86.5 lbs. 4W: 87 lbs.
Heaviest piece when disassembled:	3W: 32.5 lbs. (rear section) 4W: 34 lbs. (front section)
Standard seating:	Type: Foldable, compact, vinyl covered molded plastic Weight: 23 lbs. Material: Black Vinyl Dimensions: Width: 17", Depth: 17"
Motor output:	24-volt DC motor, sealed transaxle
Brakes:	Regenerative and electromechanical
Battery requirements <sup>3,5</sup> :	Size: (2) 18 AH Weight: 14 lbs. each, 29.5 lbs. per battery pack
Battery charger:	Off-board, 2 amp
Color:	2 sets of exciting colors with every scooter!



Red



Blue

- <sup>1</sup> Varies with user weight, terrain type, battery amp-hour (AH), battery charge, battery condition and tire condition. These specifications can be subject to a variance of (+/- 10%).
- <sup>2</sup> Due to manufacturing tolerances and continual product improvement, this specification can be subject to a variance of (+ or - 3%).
- <sup>3</sup> AGM or gel cell type required.
- <sup>4</sup> Tested in accordance with ANSI/RESNA, WC Vol2, section 4 & ISO 7176-4 standards. Results derived from theoretical calculations based on battery specifications and drive system performance. Test conducted at maximum weight capacity.
- <sup>5</sup> Battery weight may vary based on manufacturer.

**NOTE: All specifications subject to change without notice.**

The information contained herein is correct at the time of publication; we reserve the right to alter specifications without prior notice. Speed and range vary with user weight, terrain type, battery charge, battery condition and tire pressure. Due to manufacturing tolerances and continual product improvement, length, width, turning radius and ground clearance can be subject to variance of + or - 3%. Dimensions listed are for power base only. Overall measurements will vary based on seating and accessory selections.

## FEATURES

- Feather-touch disassembly with one hand
- Delta tiller with wraparound handles
- Pride's exclusive black, non-scuffing tires
- Standard 18 AH battery pack
- 9" rear wheels
- Auto-connecting front to rear cable
- Includes sets of easily changeable colored panels - Red and Blue
- Front frame-mounted seat post offers maximum stability
- Frame design easily disassembles into 5 super lightweight pieces for convenient transport and storage
- Modular design for easy serviceability
- Microprocessor-based controller offers optimal power management and added safety features
- Front tiller-mounted basket
- Removable footboard basket for additional storage (4-wheel version only)
- Convenient off-board dual voltage charger can charge battery pack on-board or off-board

## Pride® Lifts & Ramps

**Compatible Lifts:**

- Backpacker® Plus
- Backpacker® AVP
- Outlander Full Platform
- Outlander TM
- Olympian



**PRIDE® MOBILITY SCOOTERS**  
**LIVE YOUR BEST®**

(US) 800-800-8586 • (Canada) 888-570-1113

[pridemobility.com](http://pridemobility.com)